

**MSVR Race Meeting
May 22/23 2010
Brands Hatch Grand Prix circuit****FINAL INSTRUCTIONS – Issue ONE**

This meeting is organised by MotorSport Vision Racing, governed by the General Competition Rules of the MSA, incorporating the provisions of the International Sporting Code of the FIA, additional Supplementary Regulations and any written instructions the organisers issue for the event.

1. PERMIT

This event will be held under the following MSA Permit numbers: National B: 57304
This meeting is NEAFP permitted.

2. OFFICIALS

MSA Steward – Bill Shewan
Club Stewards – Michael Starke, Dave Wilkins
Event Director – David Willey
Clerks of the Course – Brian Poulter Anita Williams
Deputy Clerk of the Course - Barry Morris, Andy Butler
Secretary of the Meeting – Gemma Mole
Deputy Secretary of Meeting – Penny Mount
Chief Scrutineer - Chris Mount
Chief Marshal – Mildred Wiltshire
Chief Medical Officer – Alan Pearce
Starter – Rod Marshment
Chief Pit Marshal – Darryl Burgess
Chief Startline Marshal – Bryan Degerlund
Chief Paddock Marshal – Vincent Markey
Chief Timekeeper – Andrew Craker
Commentators – Ian Titchmarsh & Ben Evans
Race Telephones – Juliet Morris, Mildred Wiltshire
Press Officer – Colin Mann
Marshals/Event Officials - Members of the BMMC, BARC & BRSCC and other MSA recognised Clubs
Ambulances – St John Ambulance
Medical Services – St John Ambulance
Rescue Units – MSVR & BRSCC
Recovery – D&G Cars

3. COMPETITORS CIRCUIT/PADDOCK ACCESS & ALLOCATION

IT IS IMPORTANT THAT YOU FOLLOW INSTRUCTIONS REGARDING PARKING WITHIN THE PADDOCK AREAS. MSVR REQUEST THAT TRAILERS AND ROAD VEHICLES ARE PARKED SENSIBLY. PLEASE SEE ENCLOSED INSTRUCTIONS.

GT Trophy GP Paddock access from 20:30 on Thursday 20 May for GT Trophy competitors that are booked in for testing AND have reserved a garage.

GT Trophy GP Paddock access from 20:30 on Friday 21 May for GT Trophy competitors that are not booked in for testing. **ALL GT TROPHY COMPETITORS MUST VACATE THE GP PADDOCK BY 19:30 SATURDAY EVENING.**

SPEED GP Paddock access from 19:30 on Saturday 22 May for SPEED competitors.

Saturday competitors, who are testing on Friday, can access **Outer Paddock** from 18:00 on Thursday 20 May.

Saturday competitors, who are **not** testing on Friday, can access **Outer Paddock** from 18:00 on Friday 21 May.

ALL SATURDAY COMPETITORS, WHO ARE NOT COMPETING ON SUNDAY, MUST VACATE THE OUTER PADDOCK BY 19:00 SATURDAY EVENING.

Sunday competitors can access **Outer Paddock** from 18:00 on Saturday 22 May. **SUNDAY COMPETITORS MUST NOT ACCESS OUTER PADDOCK BEFORE 18:00 ON SATURDAY.**

All teams should vacate the paddock by 21:00 on Sunday 23 May.

PLEASE NOTE THAT NO PRIVATE CARS WILL BE ALLOWED IN THE PADDOCK UNLESS SPECIFICALLY AUTHORISED.

Use of Pit Garages: Garages will be reserved for GT Trophy on Saturday & SPEED on Sunday.

4. SIGNING ON FOR COMPETITORS

Signing on for competitors will be according to the timetable. At signing on all drivers must provide a) Drivers and Entrants MSA Competition Licence. b) Drivers Medical Certificate (if not incorporated in the Licence). c) Valid Club Membership (where applicable).

5. SIGNING ON FOR SENIOR OFFICIALS

Will be in Race Administration.

6. NOTICE BOARD

The Official Notice Board will be located at Race Administration.

7. TIMING SCREEN

The Official Timing Screen will be the Starters timing screen in the Pit Lane.

8. SCRUTINEERING

All cars will be examined at the time and location shown on the enclosed timetable.

9. ELIGIBILITY

Eligibility may be checked by a member of the MSA Technical Commission listed in the 2010 MSA Yearbook. These Technical Commissioners will be considered as Judges of Fact within the Regulations. The Championship MSA Licensed Eligibility Scrutineers are also considered Judges of Fact and empowered to undertake any measurements or examinations of vehicles.

10. DRIVERS RACING FOR THE FIRST TIME AT BRANDS HATCH

Competitors must read an instruction sheet that can be collected from Race Administration prior to their qualifying sessions.

11. DRIVERS BRIEFINGS

Drivers briefings will be at the times and locations given in the timetable. The organisers reserve the right to call extra briefings as appropriate. Attendance at any drivers briefing is mandatory.

12. ENGINE / NOISE POLLUTION

Engines must not be run before 0830 hours OR after 0830 hours ON Saturday.

Engines must not be run before 0930 hours OR after 1830 hours ON Sunday.

13. PIT LANE

Please note that there is a mandatory speed limit in the Pit Lane of 60 km/h. Please keep the outer lane clear at all times. The Penalty Box is in the Pit Lane adjacent to Race Control.

14. QUALIFYING

All cars will start qualifying from the Pit Lane. Please study the attached plan (**Paddock Procedure ONE**) showing how competing cars, from the Outer Paddock, flow onto the circuit.

Cars that are parked in the Outer paddock will be required in the Grand Prix paddock Assembly Area 20 minutes prior to their qualifying. On instruction from marshals, cars will proceed from the Assembly Area into the Pit Lane. Please make yourself familiar with the location of the Assembly Area before your first practice session.

Cars that are positioned in Pit Garages (GT Trophy and SPEED) will be called forward into the Pit Lane by officials prior to their qualifying session.

Please see attached plan (**Paddock Procedure TWO**) showing how competing cars exit the circuit after each session has finished.

15. RACE START PROCEDURE

GT Trophy & SPEED competitors in the Pit Garages will be called forward into the Pit Lane prior to race start by officials. Competitors will be released from the Pit Lane via the route as on Paddock Procedure THREE - NOT around the GP circuit. Cars may be led to the grid by a Course Car, notwithstanding recovery operations from the previous race. When the pit exit lights turn to GREEN they will remain green for 90 seconds and then turn RED. Any car in the pit lane when the lights have turned to red will be a pit lane starter on the first racing lap.

Competitors in **all other races** will assemble in the Grand Prix Paddock Assembly Area. On instruction from officials, all cars will **proceed directly onto the grid (see Paddock Procedure ONE)**. Once cars are in position on the grid, the countdown will begin.

In ideal conditions the racing programme may be brought forward by up to 20 minutes and competitors should ensure that they are in their correct location in good time.

Start Lights

For races with Standing Starts the start lights will operate as follows:

- When all cars are in position, one pair of red lights will be switched on indicating '5 seconds'.
- Further pairs of lights will illuminate until all 5 Red Lights are illuminated.
- The start is given when all Red lights go off.
- In the event of an Abort Start, 5 amber lights will flash.

16. GRIDS

Grid selection will be in accordance with Championship Regulations.

17. COUNTDOWNS

For all races, the countdown will start at the 1 minute signal unless otherwise specified in Championship Regulations.

18. END OF PRACTICE, QUALIFYING AND RACE PROCEDURE

Please see attached plan (Paddock Procedure TWO). At the end of each practice, qualifying and race all cars must slow down after taking the Chequered Flag and leave the circuit at Marshal Post 9 – NOT continue around the GP loop. Cars will then proceed to the Pit Lane or Parc Fermé. Winners will stop at the podium for presentations where cars will be under Parc Fermé conditions.

19. SAFETY CAR

The Clerk of the Course has the option to deploy a Safety Car for all qualifying and races.

The Safety Car will join the circuit at Marshals Post 8 and leave the circuit by entering the Pit Lane. Safety Car regulations are available at Race Administration.

19. RED FLAGS

Any category generating a Red Flag may be placed at the end of the programme subject to time remaining available.

20. JUDGES OF FACT

The Judges of Fact will be the Judges, Timekeepers, Observers, Flag Marshals, Scrutineers & Technical Commissioners.

Starting Judges: To declare any false starts or other infringements.

Finishing Judges: To declare the order in which the cars cross the finish line when the end of the race is given or the scheduled race distance is completed by the winner.

Timekeepers: To declare the individual lap times and the order in which the cars cross the timing line throughout the competition.

Flag Marshals: To declare any infringements of the signals prescribed in Appendix H of the International Sporting Code.

Scrutineers & Technical Commission: To declare any infringement of vehicle safety and eligibility.

21. Timing

All competitors are required to use a AMB TranX 260 either direct powered or battery transponder.

Transponders can be purchased from TSL at www.tsl-timing.com in advance of the meeting.

Competitors with compliant transponders should supply the transponder number in advance of the event to their respective Championship Coordinator.

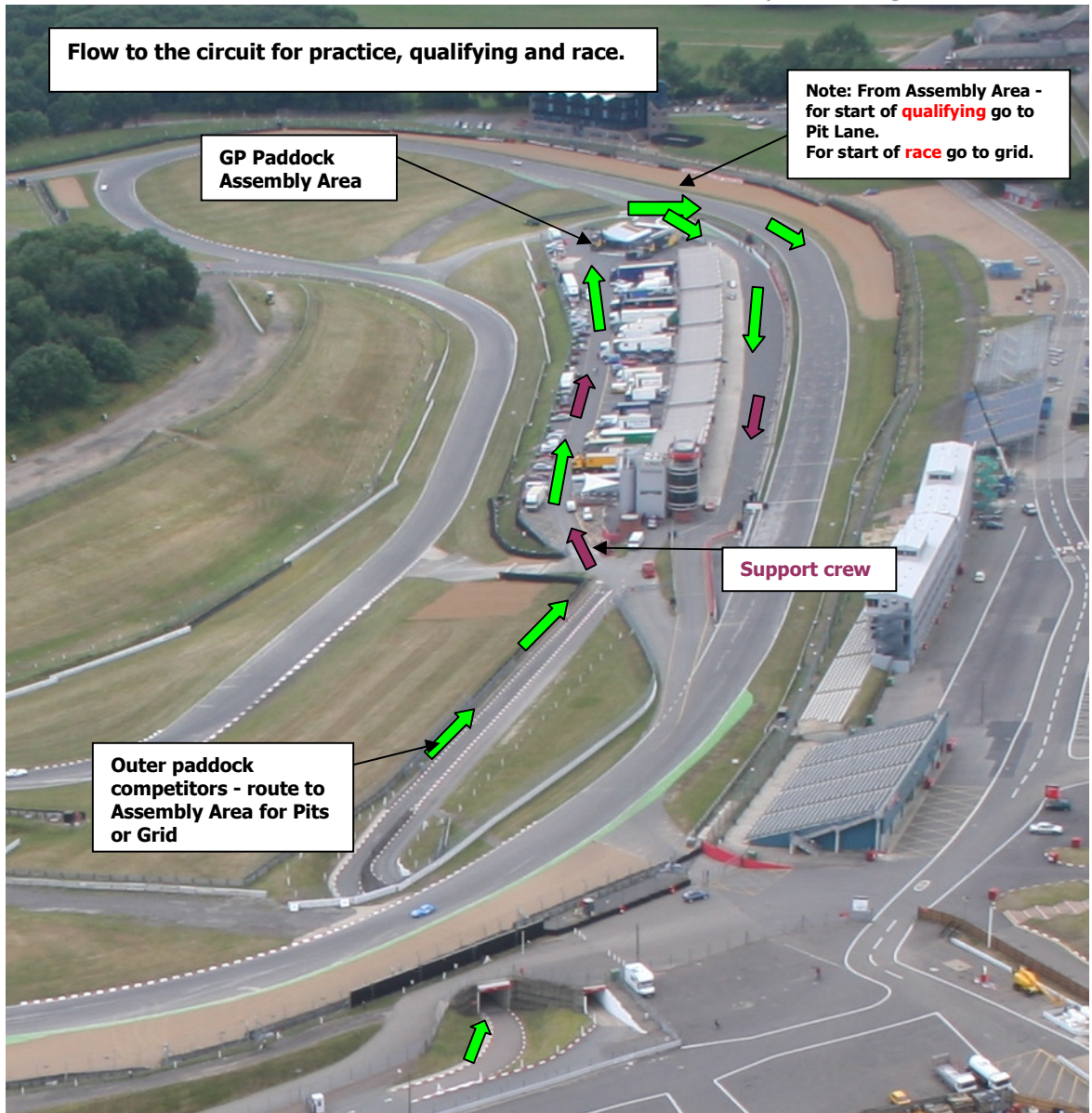
22. Special Circuit Notices

Pit Lane: Children under the age 16 years old are not admitted to the pit garages or Pit Lane. No smoking is permitted in the Pit Lane. The use of fun bikes is not permitted unless towing a trailer for the purpose of transporting ancillary motor race equipment. No competitor may ride motorcycles or cycles in the pit road at any time when the circuit is operational. Any misuse of "paddock bikes" will be brought to the attention of the Senior Officials and appropriate action will be taken.

We wish you a safe and successful meeting.

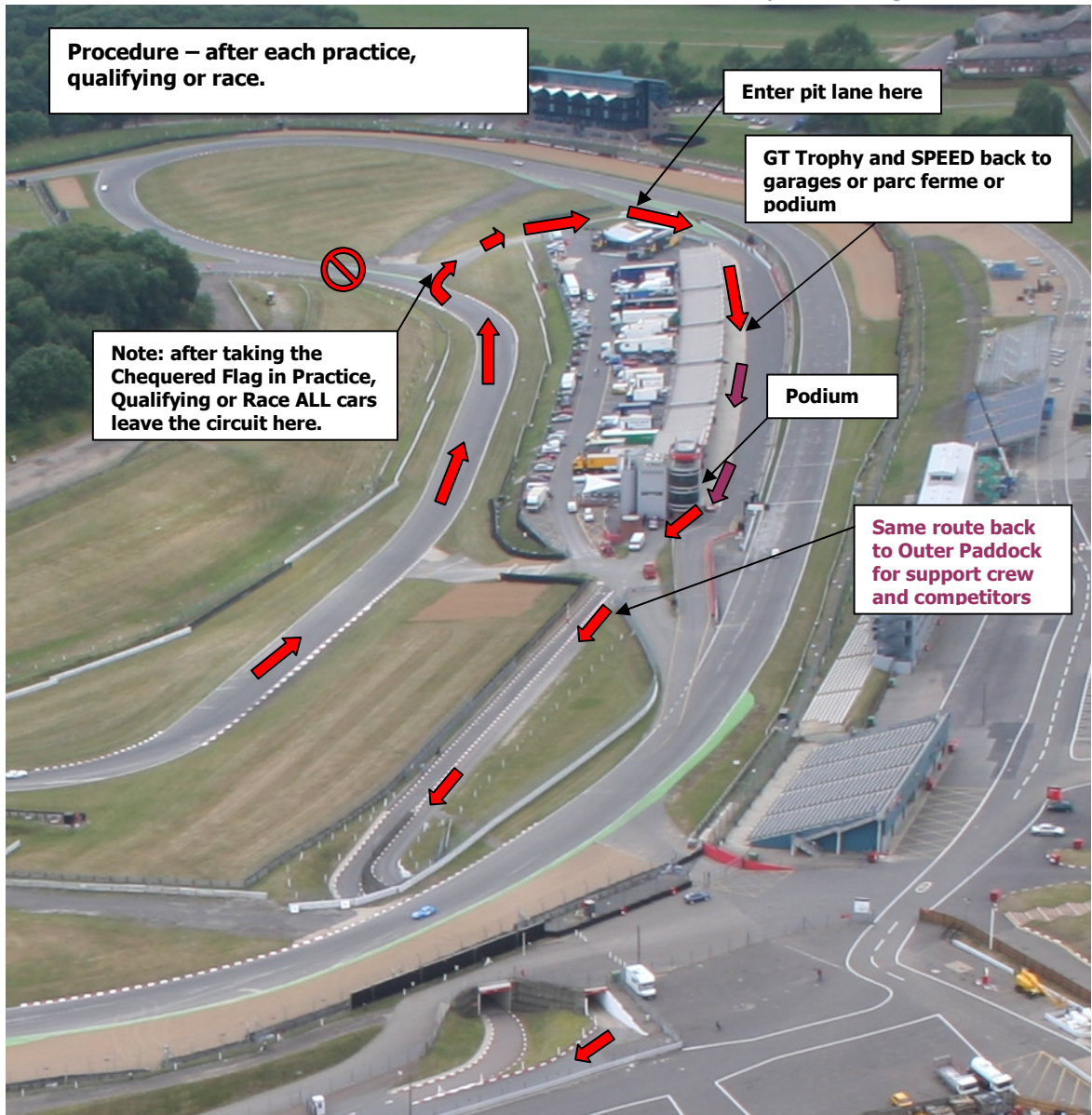
David Willey
Event Director

Gemma Mole
Secretary of the Meeting



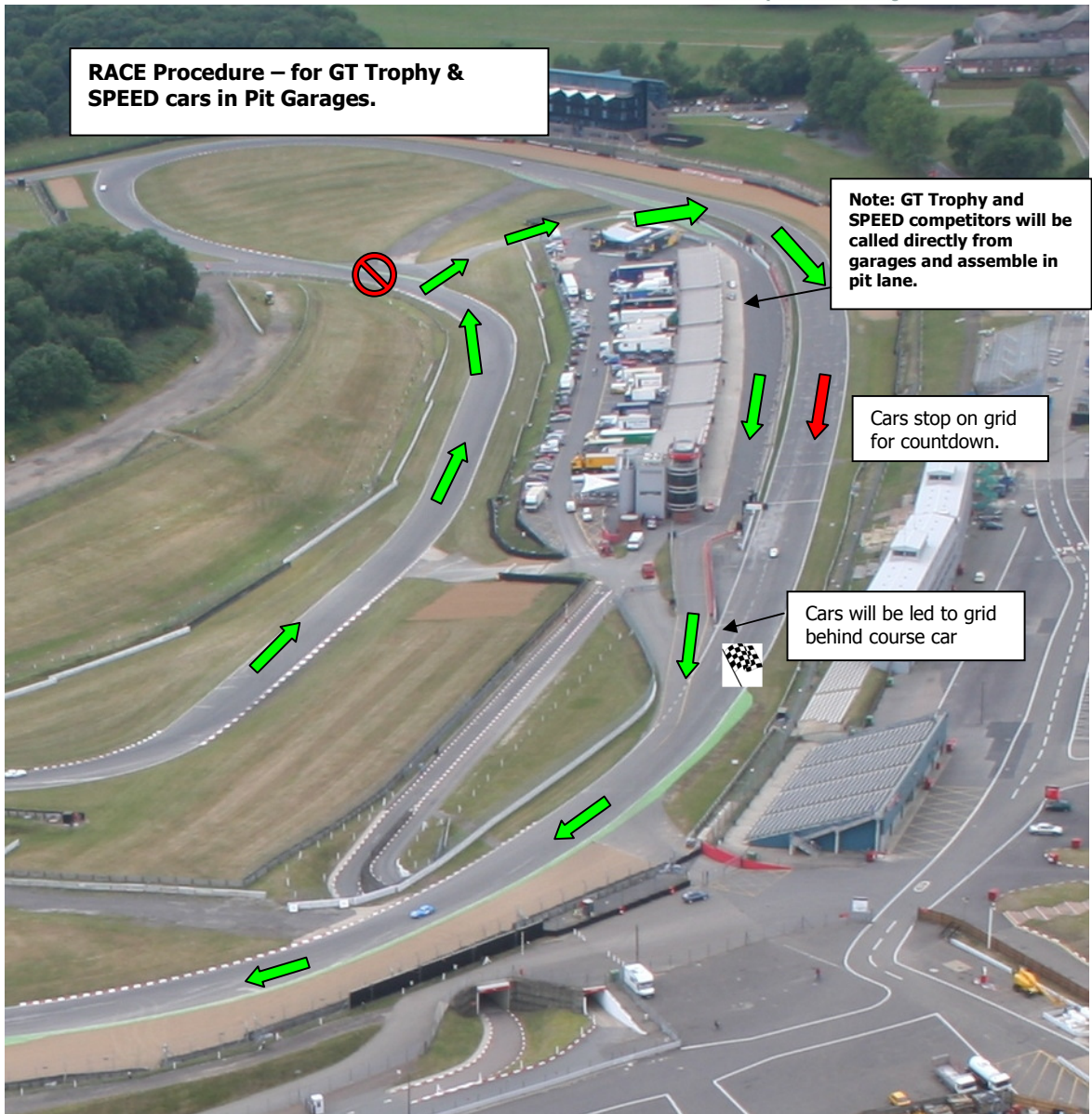
Procedure for cars in outer paddock and garages.
Flow to circuit for practice, qualifying and race.

Paddock Procedures ONE



End of Practice or Race Procedure
After taking Chequered Flag and returning to paddock please clear Pit Lane immediately after your session.

Paddock Procedures TWO



**Procedure for cars in Pit Garages – GT Trophy and SPEED
Flow to GRID for race.**

Paddock Procedures THREE